

Thank you for choosing

LAUNCH



*It is our pleasure to be your choice for Automotive Diagnostics.
Before you get started using your new product, please take a moment to review the
following setup instructions. If you need assistance, do not hesitate to contact our*

Product Support line at: 877-528-6249 xt: 4

*We look forward to working with you, and wish you success
in the Automotive Aftermarket!*

X-431 Download Procedures Guide

Table of Contents

2.....	Registering a New Product
3.....	Downloading & Updating
4.....	Transferring software to CF card
5.....	Erasing/Formatting CF card
7.....	Calibrating the screen
8.....	Pairing the Blue Tooth & Print Test
9.....	Company Information

REGISTERING A NEW PRODUCT

What it is

- Performed once, the first-time you set up your scan tool
- Creates a username and password
- Where you will enter your information (phone number, address, etc)
- Important for warranty

What you will need

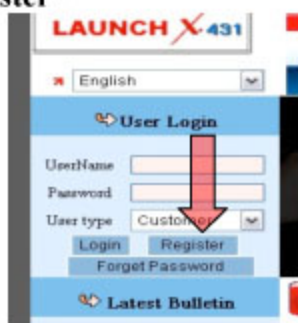
- The Private & Confidential Envelope



- Computer with Windows (only) and access to the internet via Internet Explorer (only)
- 10-15 minutes to complete

NOTE: IF YOU HAVE ALREADY REGISTERED, AND YOU WOULD LIKE TO UPDATE, PLEASE SKIP TO THE “DOWNLOAD/UPDATE PROCEDURE”

1. Go to www.x431.com
2. Select “Launch China” or “Other Area” (usa.x431.com)
 - a. These sites are identical and in English; if one site is down, the other link will be available
 - b. Be consistent: if you choose to register on Launch China, do your initial downloading there also (updating later will work on either link)
3. Click on the button “Register”



4. Check mark “Agree” after reviewing the “Terms and Agreements”, and click “Next”
5. Refer to your “Private and Confidential” Envelope for
 - a. Product Serial Number
 - b. Register Password
 - c. Dealer Code – should be located on your booklet and/or sticker on shipping package



6. Complete the information

- Username CAN NEVER BE CHANGED**
- Information can be edited by logging in after registration, and clicking on “Member Info” (link listed below “Download Center” link)
- Password can be changed by clicking “Password Change” below “Member Info”

DOWNLOADING/UPDATING

What you will need

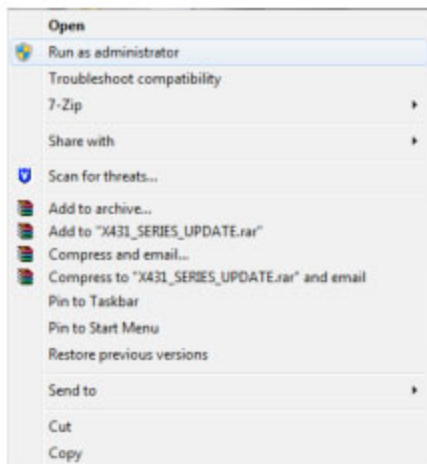
- PC Computer with Windows (only) and access to the Internet via Internet Explorer (only)
- Disable firewall, anti-virus/spy ware software
Enable immediately after completing all downloads!
- 15-20 minutes to complete all downloads

- Go to www.x431.com
- Select the site link where you registered (Alternative or Main Site)
- Log in with your Username and Password (case sensitive), and re-type the verification code as it appears
- Select Down, then **RUN X431 Serial Update software V7.3***

**Version subject to change. Please download the latest version only!*

WINDOWS 7 USERS: Please SAVE this program to your Desktop. On your

desktop, right click on the Setup Icon . Select “Run as Administrator”.

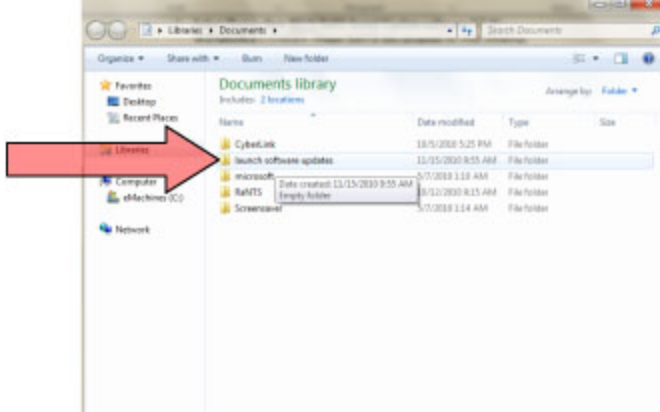
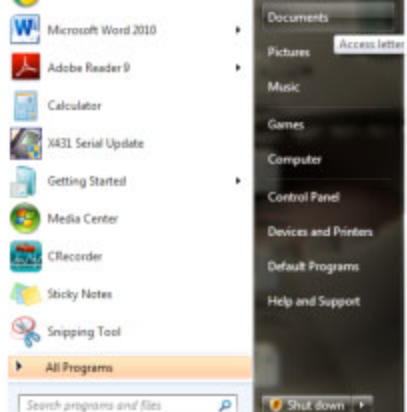


- Continue through the installation by selecting your language, Next, Finish and Install. Once completed, you should see the X431 Serial Update icon



on your desktop. You do not need to open the program until the last step of the download procedure.

This program will automatically create a folder under “My Documents” titled “launch software updates”. This is the folder you will want to save your software to in the next step. OPTIONAL: You can move this folder, or create a new folder, if you prefer.



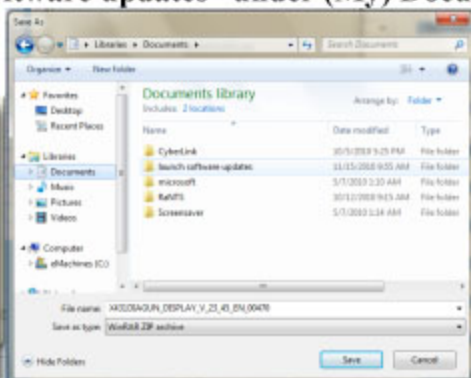
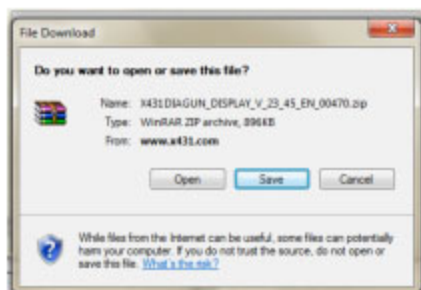
6. Return to the Download Center. Click 'Download' to the right of Display V.16.40*

Number	Software Name	Latest version	Release date	Download Version	Language	
a	X431 DISPLAY	16.40	2010-07-30	16.40	English	Download

*Subject to change. Download current release. This is required to run software!

7. Select 'Save'

8. 'Save' to the folder "launch software updates" under (My) Documents



9. Return to Download Center. Click 'Download' to the right of X-431 Tool Infinite Data V.10.80* and SAVE to the same folder (Launch Software Updates)

*Subject to change. Download current release. This is required to run software!

10. Download your vehicle software: Click 'Download' then 'Save'

INDIVIDUALLY each manufacturer you desire. 'Save' to the same folder as your Display.

DO NOT DOWNLOAD IN BATCH!

TRANSFERRING SOFTWARE TO COMPACT FLASH (CF) CARD

What it is

- Process (Program) to transfer X-431 downloads to Compact Flash (CF) Card

What you will need

- Completed registration and download procedures
- CF Card and the CF Card Adapter (Black, looks similar to a jump drive)
- Locate a USB Port in the front or back of your PC

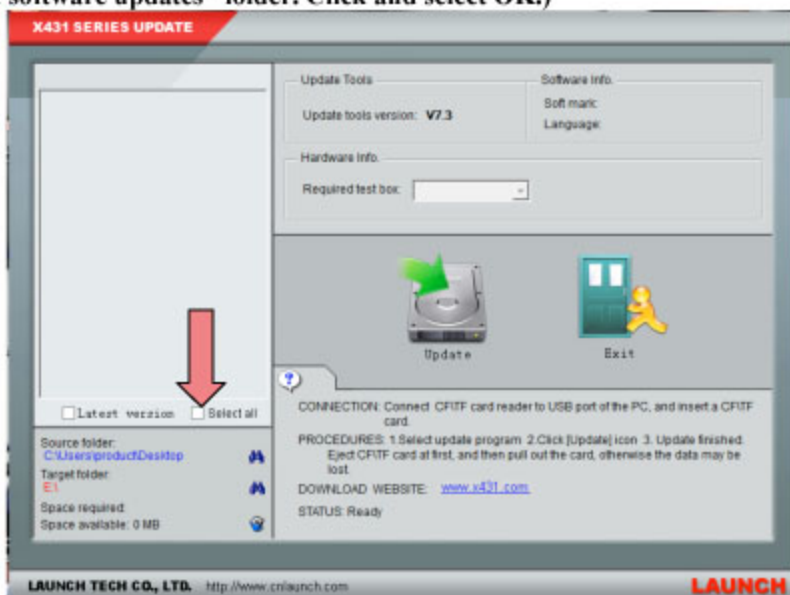
1. Insert the CF card into the LAUNCH adapter (looks like a black, jump drive)



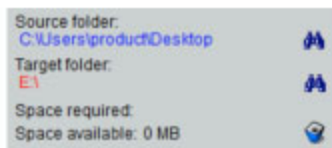
2. Connect the adapter with the CF card inserted, into a USB port on your PC.
 - a. The green light on the adapter should illuminate
 - b. Your PC should “recognize” that hardware has been installed with a message from Windows prompting what you would like to do with the hardware. Close this message and continue this procedure.
 - c. Note the letter of the drive it was installed in. (ex: “E:”)
3. Format the CF card (please refer to the steps on page 6 “Formatting”)
4. Double click on the “X-431 Serial Update” icon on your desktop.




1. Click on the box next to “Select all” (If you do not see any software in the light gray box, click on the binoculars to the right of Source Folder and look under (My)Documents for the “launch software updates” folder. Click and select OK.)



2. Click on the binoculars to the right of “Target folder” and select the letter of the drive where you inserted the adapter/CF card. Click OK, and the letter should appear below “Target folder”



3. Verify the “Space Required” and “Space Available” figures
 - a. Space Required will amount all of your software in Mega Bytes
 - b. Space Available will show the space left over once you update the CF Card *(As long as there is a number visible, you have enough space)*
4. Click on the “Update”  button in the middle of the screen, with a green arrow, and “OK” to the message.
5. Wait for the software to alert you with “Update Succeeded” then EJECT the CF Card, then remove the adapter with the CF card from your computer.
 - a. To EJECT:
 - i. Go to “My Computer” under “Start” on your PC
 - ii. Right click on the letter of your hardware
 - iii. Select “Eject”
 - iv. Your computer will alert you “it is safe to remove hardware”

*You have now completed the setup of your X431 Tool.
Once the CF card is connected to your Master you will be ready to diagnose vehicles.*

Please Note: The initial start up of your product may take up to 5 minutes following a Software Update

The following procedures are not required for initial tool set up, unless previously stated. Please refer to these instructions if you have problems communicating, updating, or printing.

FORMATTING YOUR COMPACT FLASH CARD

What it is

- Erases your CF Card completely

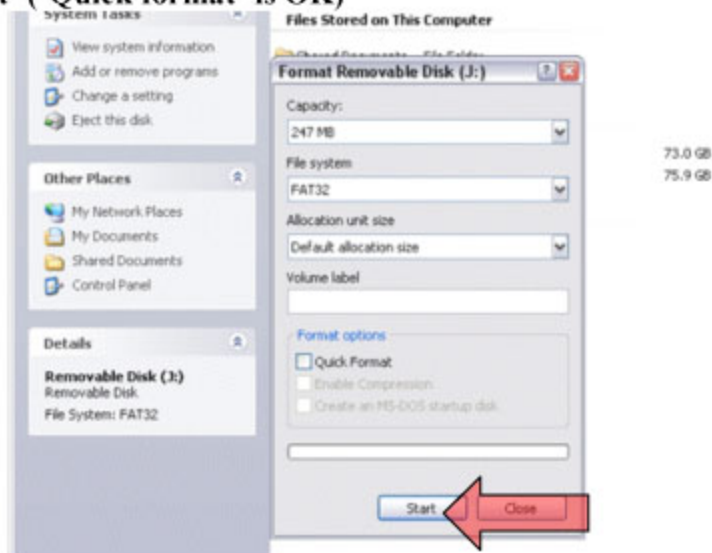
What you will need

- CF Card and the CF Card Adapter
- Locate a USB Port in the front or back of your PC

1. Insert the CF card to the adapter, and connect to a USB port
2. Go to ‘My Computer’, usually located on your PC under ‘Start’ or on your desktop
3. Right click the letter corresponding to your CF Card (ex: ‘E:’)
4. Select ‘Format’
5. Your computer will alert you that formatting is irreversible, select OK.



6. Select 'Start' ('Quick format' is OK)



7. Your computer will alert you with "Format complete"

If Formatting fails, the most likely cause is a damaged CF card (try to format in alternate USB ports before determining). This can be replaced with a new card found at most computer stores. Avoid using higher than a 2GB card, and use a quality name brand. After formatting, you will be ready to download/transfer software (Refer to pages 3—5 of this document).

CALIBRATING THE TOUCH SCREEN

What it is

- Resets your touch panel; performed after a software update, when the scan tool freezes, or does not respond to touch

What you will need

- Scan tool
- Stylus pen

1. Insert CF card to scan tool
2. Turn on scan tool
3. A message will appear "To calibrate touch panel, press the hotkey"...PRESS the hot key until the next message appears, "Detecting noise, please wait"
4. A small square will appear in the middle of the screen. Using your stylus pen, touch the square for 2 seconds, then lift your pen and allow the square to move to the bottom, left corner.
5. Use your stylus again to touch the square for 2 seconds, then lift your pen and allow the square to move to the top left.
6. Repeat this 2 more times (moves to top right, then bottom right).
7. When you touch the square in the bottom right it will move to the center then complete the start up.

DO NOT DRAG THE STYLUS OR TRACE THE LINE OF THE SQUARE!

PAIRING THE BLUE TOOTH

This procedure connects the scan tool to the wireless smartbox. **You will need to pair the blue tooth if the blue light on the smartbox is flashing.** When properly paired, the blue light will be solid.

1. Turn on scan tool; have smartbox connected to vehicle.
2. Select "Start"
3. "Tools"
4. "Run"
5. "USR"
6. "PDA"
7. "BIN"
8. "BT Pair" (at the bottom of the list)
9. Select "OK", then "OK" again

PRINT TEST

The paper used is thermal paper and will only print on one side. If the paper feeds but remains blank, have the customer either reinstall the paper the other way, or run through a print test.

1. Turn on scan tool; have paper installed.
2. Select "Start"
3. "Tool"
4. "Run"
5. "USR"
6. "PDA"
7. "BIN"
8. "Test Print"

For paper that will not feed, open the cover to check that the lock bar is in the locked position.

THANK YOU!

Questions or Comments? Please contact:

**Product Support
Monday-Friday
5:00am-5:00pm PST**

LAUNCH Tech USA Corporate Headquarters: 1-877-LAUNCH-9 (528-6249)
1820 S. Milliken Ave. • Ontario, CA 91761

Please visit our public forum
<http://launch.activeboard.com/>

Join us on Twitter and Facebook
<http://twitter.com/launchtechusa>
<http://www.facebook.com/launchtechusa>

www.launchtechusa.com